

# HIV and Infectious Diseases among Girls and Young women in Tanzania

Goodluck Lyatuu, MD. MPH.

Management and Development for Health



# Why Adolescent Girls and young Women (AGYW)?

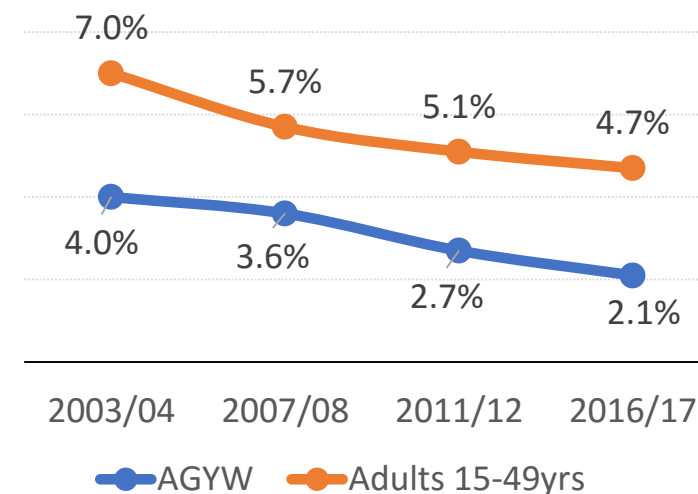
## Sub-Saharan Africa

- 450,000 new HIV infections among AGYW (15-24 yrs) in SSA in 2015
  - 8600 new infections/ week

## In Tanzania

- 18,000 new HIV infections among AGYW (UNAIDS)
- HIV Prev. 2.1% (THIS 2016) vs. 0.6% among boys/men

Trend in HIV Prevalence in Tanzania



## Global target:

- 75% reduction in new HIV infections in AGYW by 2020 (from 2010)



# What influences high incidence of HIV among AGYW

## Behavioral

- Age-disparate sex; Multiple partnerships; Sex work & sexually exploited AGYW; Transactional sex; Early sexual debut; Gaps in Knowledge & limited personalized risk perception

## Biological

- Biological susceptibility of women & adolescent girls; High HIV viral load among male partners; Low prevalence of male circumcision; Harmful practices; Other Infections

## Structural

- Harmful social & gender norms, inequality & unequal power dynamics; Low sec. school attendance; Labor migration & spousal separation; Barriers to accessing SRH & HIV services; Orphan-hood; Child sexual abuse; GBV; Marriage patterns

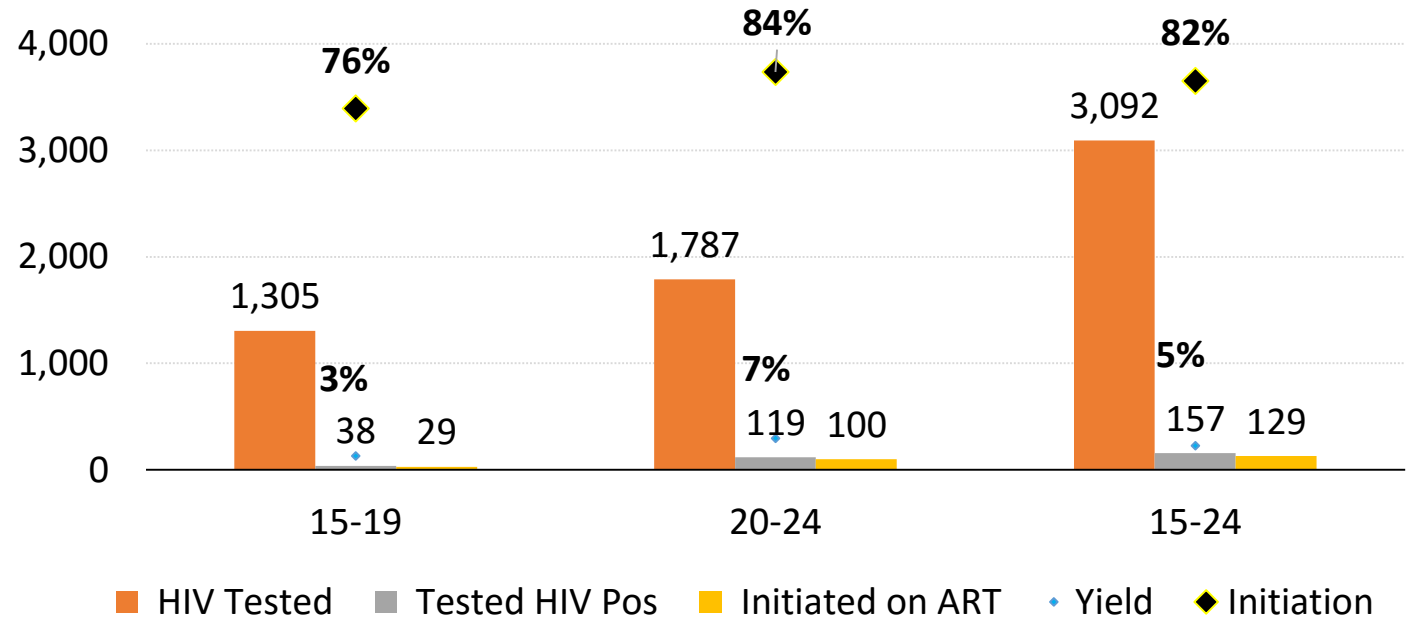


# What are we doing about it

**DREAMS** Initiative for adolescent girls and young women

- Temeke District: 2 wards, community, schools, OVCs & 8 HF's
- Comprehensive HIV Prevention, Care and Treatment
  - HIV testing; ART; Adolescents & youth friendly services; Sexual & reproductive health, Psychosocial & adherence support; Viral load monitoring; PMTCT
- Integration of services: STI, FP, ANC, GBV, PEP

HIV Cascade in 8 Dreams sites



Mimi ni  
**Shujaa**

NINA ELIMU KUHUSU

**AFYA YA UZAZI**



# What Next...

- Scaling up successful interventions & best practices
- Multi-sectoral approaches
- Integration of Interventions and Services
- Increasing engagement of AGYW peers as agents of change in adolescents health
- Routine analysis & responding to emerging evidence from routine data